



## Precise Mortgage Funding 2020-1B PLC

Report for Distribution dated Apr 16, 2025

Global Corporate Trust  
<http://pivot.usbank.com/>





## Precise Mortgage Funding 2020-1B PLC

### Monthly Investor Report

April 2025

**Analyst**

Tahir Uddin  
tahir.uddin@usbank.com  
+44 207 330 2371

**U.S. Bank Global Corporate Trust Address**

5th Floor  
125 Old Broad Street  
London, EC2N 1AR

**Distribution Date**

16-Apr-25

**U.S. Bank Global Corporate Trust Website**

<https://pivot.usbank.com>

General Information		Content	
Interest Payment Date:	16-Apr-25	Deal Summary	2
Prior Interest Payment Date:	17-Mar-25	Deal Performance Summary - Last 4 IPD	3
Next Interest Payment Date:	16-May-25	Collateral Performance Graphs	4
Distribution Count:	63	Delinquencies Graphs	5
Closing Date:	24-Jan-20	Deal Counterparties	6
Final Maturity Date:	16-Oct-56	Note Distribution Detail	7
Interest Determination Date:	9-Apr-25	Note Interest Reconciliation - Accrual	8
Next Interest Determination Date:	9-May-25	Note Interest Reconciliation - Deferred	9
Index:	SONIA	Note Principal Reconciliation	10
Currency:	GBP (£)	Residual Certificates	11
		Ratings Information	12
		Cash Reconciliation	13
		Other Required Information	14
		Mortgage Principal Analysis	15
		Principal Deficiency Ledger	16
		Reserve Fund Ledgers	17
		Reserve Funds and Principal Allocation	18
		Swap Transaction Details	19
		Triggers	20-21
		Portfolio Performance	22-23
		Collateral Report	24-25
		Prepayment Rate (CPR)	26
		Priority of Payments	27-35
		Portfolio Analysis	36-42



## Precise Mortgage Funding 2020-1B PLC

### Monthly Investor Report

April 2025

#### Deal Summary

Notes	Original Principal Balance	Credit Enhancement on Closing	Fitch/S&P Initial Ratings		Outstanding Principal Balance	Pool Factor	Current Credit Enhancement	Fitch/S&P Current Ratings		Fitch/S&P Watch
Class A1 Notes	226,220,000.00	14.50%	AAA	AAA	0.00	0.000000	40.86%	PIF	NR	
Class A2 Notes	100,710,000.00	14.50%	AAA	AAA	75,928,202.05	0.753929	40.86%	AAA	AAA	
Class B Notes	15,970,000.00	10.25%	AA+	AA+	15,970,000.00	1.000000	28.07%	AAA	AAA	
Class C Notes	15,970,000.00	6.00%	A	AA-	15,970,000.00	1.000000	15.27%	AA+	AA	
Class D Notes	9,390,000.00	3.50%	BBB	A	9,390,000.00	1.000000	7.74%	A+	A+	
Class E Notes	7,520,000.00	1.50%	BB+	BB+	7,520,000.00	1.000000	1.72%	BB+	BBB-	
Class X Notes	13,150,000.00	0.00%	BB+	B	0.00	0.000000	0.00%	PIF	NR	
<b>Total</b>	<b>388,930,000.00</b>				<b>124,778,202.05</b>					



## Precise Mortgage Funding 2020-1B PLC

### Monthly Investor Report

April 2025

#### Deal Performance Summary - Last 4 IPD

	Cut off	IPD 60	IPD 61	IPD 62	IPD 63
<b>Delinquencies</b>					
1-2 Months in Arrears		1.42%	0.82%	1.46%	1.16%
2-3 Months in Arrears		0.39%	0.49%	0.27%	0.39%
3-4 Months in Arrears		0.00%	0.30%	0.22%	0.27%
4+ Months in Arrears		0.37%	0.17%	0.17%	0.17%
<b>Excess Spread</b>					
Amount during Period		0.00	0.00	0.00	0.00
Percentage of Pool (Annualised)		0.00%	0.00%	0.00%	0.00%
<b>Constant Prepayment Rate (CPR)</b>					
Period		28.76%	33.10%	32.84%	25.48%
Since Cut off		18.22%	18.55%	18.57%	18.59%
<b>Principal Payment Rate (PPR)</b>					
Total Principal Payments in Period		6,307,158.25	5,165,252.76	2,596,958.01	2,251,644.62
Mortgage Principal Closing Balance	375,460,578.05	135,792,777.04	130,839,374.95	128,445,260.68	126,088,964.65
Percentage of Cut off Balance (%)		4.64%	3.95%	2.02%	1.79%
<b>Payment Rate</b>					
Percentage of Interest Due (%)		100.00%	100.00%	100.00%	100.00%
<b>Cumulative Losses</b>					
Percentage of Initial Principal Balance (%)		0.00%	0.00%	0.00%	0.00%



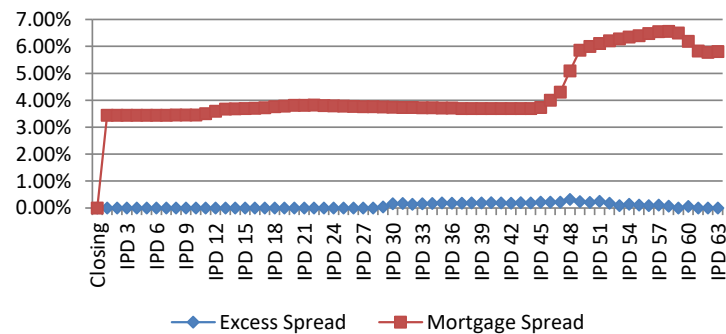
## Precise Mortgage Funding 2020-1B PLC

### Monthly Investor Report

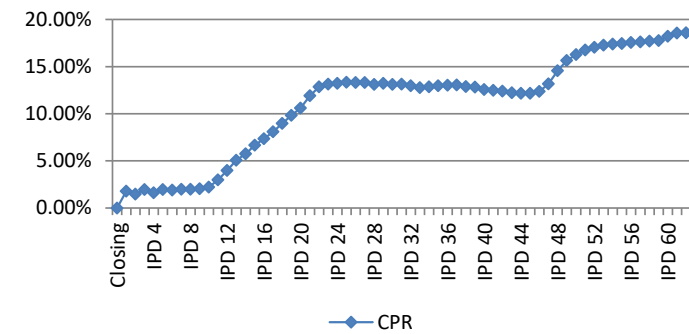
April 2025

#### Collateral Performance Graphs

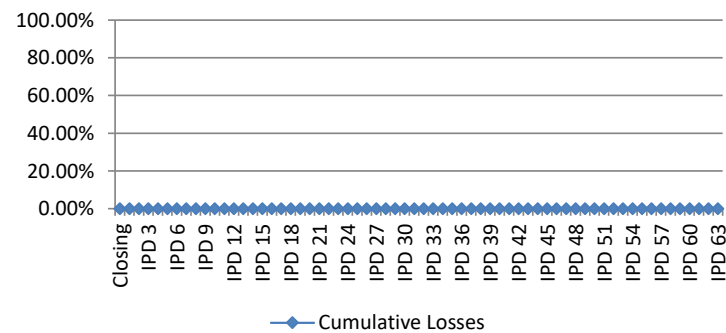
#### Mortgage Margin & Excess Spread



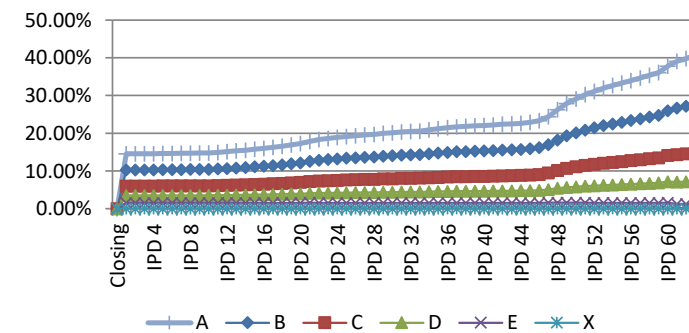
#### CPR (since issue)



#### Cumulative Losses



#### Credit Enhancement





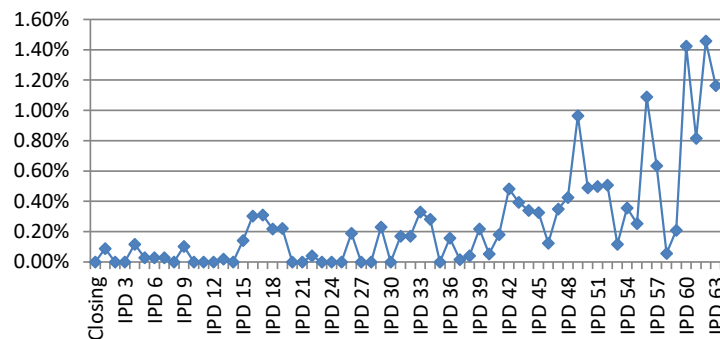
## Precise Mortgage Funding 2020-1B PLC

### Monthly Investor Report

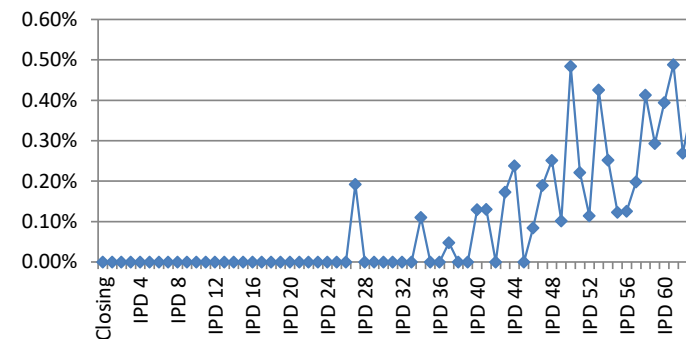
April 2025

#### Delinquencies Graphs

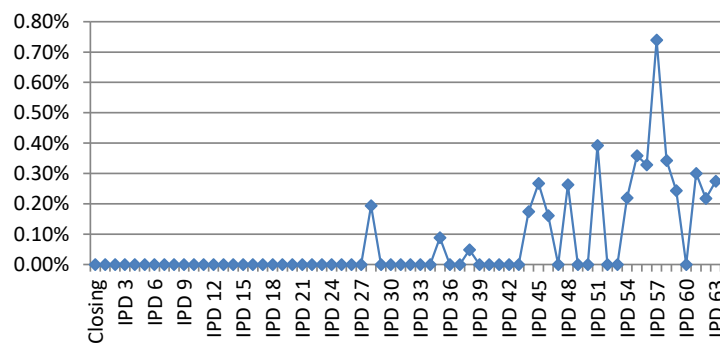
**Delinquencies (1-2 Months in Arrears)**



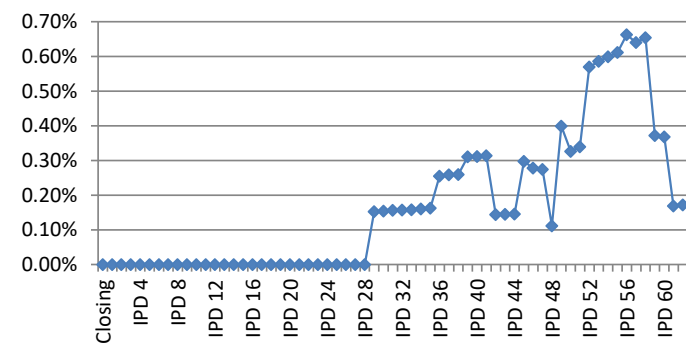
**Delinquencies (2-3 Months in Arrears)**



**Delinquencies (3-4 Months in Arrears)**



**Delinquencies (4+ Months in Arrears)**





## Precise Mortgage Funding 2020-1B PLC

### Monthly Investor Report

April 2025

Deal Counterparties								
Role	Counterparty	S&P			Fitch			comments
		Long-Term	Short-Term	Rating Trigger	Long-Term	Short-Term	Rating Trigger	
Issuer	Precise Mortgage Funding 2020-1B PLC							
Holdings	Precise Mortgage Holdings 2020-1B Limited							
Legal Title Holder	Charter Court Financial Services Limited							
Servicer	Charter Mortgages Limited							
Seller	Charter Mortgages Limited							
Cash Manager	U.S. Bank Global Corporate Trust Limited							
Swap Provider	Lloyds Bank Corporate Markets plc	A	A-1	A-	AA-	F1+	A/F1	
Issuer Account Bank	U.S. Bank Europe DAC United Kingdom Branch	A+	A-1	A/A-1	A+	F1	A/F1	
Collection Account Bank	Barclays Bank PLC	A+	A-1	BBB/A-2	A+	F1	BBB+/F2	
Security Trustee	U.S. Bank Trustees Limited							
Note Trustee	U.S. Bank Trustees Limited							
Principal Paying Agent	U.S. Bank Europe DAC United Kingdom Branch							
Agent Bank	U.S. Bank Europe DAC United Kingdom Branch							
Registrar	U.S. Bank Europe DAC							
Corporate Services Provider	CSC Capital Markets UK Limited							
Back-up Servicer Facilitator	CSC Capital Markets UK Limited							
Share Trustee	CSC Corporate Services (UK) Limited							
Arranger	Merril Lynch International							
Joint Lead Manager	Lloyds Bank Corporate Markets plc							
	Merril Lynch International							

Pursuant to the Subscription Agreement, CCFS will undertake to the Joint Lead Managers and the Arranger that it will (i) retain on an ongoing basis, the Retained Exposures as required by Article 6(1) of the Securitisation Regulation (which does not take into account any corresponding national measures), (ii) comply with the disclosure obligations under Article 7(l)(e)(iii) of the Securitisation Regulation by confirming the risk retention of the Seller as contemplated by Articles 6(1) and 6.3(c) of the Securitisation Regulation and (iii) not sell, hedge or otherwise mitigate (and shall procure that none of its affiliates shall sell, hedge or otherwise mitigate) the credit risk under or associated with the Retained Exposures except to the extent permitted under the Securitisation Regulation. As at the Closing Date, such retention requirement will be satisfied by CCFS retaining randomly selected exposures equivalent to no less than 5 per cent. of the nominal value of the securitised exposures, where such exposures would otherwise have been securitised in the transaction effected by the Issuer in accordance with Article 6(3)(c) of the Securitisation Regulation. Any change to the manner in which such interest is held will be notified to the Noteholders. Except with the express written consent of the Seller in the form of a U.S. Risk Retention Consent and where such sale falls within the exemption provided by Section 20 of the U.S. Risk Retention Rules, the Notes or the Residual Certificates offered and sold by the Issuer may not be purchased by any person except for persons that are not Risk Retention U.S. Persons.



## Precise Mortgage Funding 2020-1B PLC

### Monthly Investor Report

April 2025

#### Note Distribution Detail

Notes	ISIN / Common Code	Original Principal Balance	No. Of Notes	Beginning Principal Balance	Total Principal Distribution	Ending Principal Balance	Total Interest Distribution*	Note Placement
Class A1 Notes	XS2097423060 / 209742306	226,220,000.00	2,262	0.00	0.00	0.00	0.00	Public
Class A2 Notes	XS2097425354 / 209742535	100,710,000.00	1,007	78,179,846.67	2,251,644.62	75,928,202.05	403,854.63	Sellers Group
Class B Notes	XS2097426246 / 209742624	15,970,000.00	160	15,970,000.00	0.00	15,970,000.00	87,133.98	Public
Class C Notes	XS2097426329 / 209742632	15,970,000.00	160	15,970,000.00	0.00	15,970,000.00	92,056.24	Public
Class D Notes	XS2097426832 / 209742683	9,390,000.00	94	9,390,000.00	0.00	9,390,000.00	57,021.17	Public
Class E Notes	XS2097426915 / 209742691	7,520,000.00	75	7,520,000.00	0.00	7,520,000.00	52,927.98	Public
Class X Notes	XS2097427301 / 209742730	13,150,000.00	132	0.00	0.00	0.00	0.00	Public
<b>Total</b>		<b>388,930,000.00</b>	<b>3,889</b>	<b>127,029,846.67</b>	<b>2,251,644.62</b>	<b>124,778,202.05</b>	<b>692,994.00</b>	

\*Class A2 interest has been adjusted by £1,393.78 as it was underpaid by this amount due to Class A and B Liquidity Release.





## Precise Mortgage Funding 2020-1B PLC

### Monthly Investor Report

April 2025

#### Note Interest Reconciliation - Accrual

Notes	ISIN / Common Code	Method	Days	Beginning Principal Balance	Rate of Interest	Total Interest Accrued	Other Interest	Total Interest Distribution
Class A1 Notes	XS2097423060 / 209742306	Actual/365 (Fixed)	30	0.00	5.85826%	0.00	0.00	0.00
Class A2 Notes	XS2097425354 / 209742535	Actual/365 (Fixed)	30	78,179,846.67	6.26326%	403,854.63	0.00	403,854.63
Class B Notes	XS2097426246 / 209742624	Actual/365 (Fixed)	30	15,970,000.00	6.63826%	87,133.98	0.00	87,133.98
Class C Notes	XS2097426329 / 209742632	Actual/365 (Fixed)	30	15,970,000.00	7.01326%	92,056.24	0.00	92,056.24
Class D Notes	XS2097426832 / 209742683	Actual/365 (Fixed)	30	9,390,000.00	7.38826%	57,021.17	0.00	57,021.17
Class E Notes	XS2097426915 / 209742691	Actual/365 (Fixed)	30	7,520,000.00	8.56326%	52,927.98	0.00	52,927.98
Class X Notes	XS2097427301 / 209742730	Actual/365 (Fixed)	30	0.00	7.71326%	0.00	0.00	0.00
<b>Total</b>				<b>127,029,846.67</b>		<b>692,994.00</b>	<b>0.00</b>	<b>692,994.00</b>



## Precise Mortgage Funding 2020-1B PLC

### Monthly Investor Report

April 2025

#### Note Interest Reconciliation - Deferred

Notes	ISIN / Common Code	Beginning Deferred Interest	Interest Accrued on Deferred Interest	Current Period Deferred Interest	Deferred Interest Payments	Ending Deferred Interest
Class A1 Notes	XS2097423060 / 209742306	0.00	0.00	0.00	0.00	0.00
Class A2 Notes	XS2097425354 / 209742535	0.00	0.00	0.00	0.00	0.00
Class B Notes	XS2097426246 / 209742624	0.00	0.00	0.00	0.00	0.00
Class C Notes	XS2097426329 / 209742632	0.00	0.00	0.00	0.00	0.00
Class D Notes	XS2097426832 / 209742683	0.00	0.00	0.00	0.00	0.00
Class E Notes	XS2097426915 / 209742691	0.00	0.00	0.00	0.00	0.00
Class X Notes	XS2097427301 / 209742730	0.00	0.00	0.00	0.00	0.00
<b>Total</b>		<b>0.00</b>	<b>0.00</b>	<b>0.00</b>	<b>0.00</b>	<b>0.00</b>



## Precise Mortgage Funding 2020-1B PLC

### Monthly Investor Report

April 2025

#### Note Principal Reconciliation

Notes	Beginning Principal Balance	Total Principal Distribution	Ending Principal Balance	--- Credit Support ---	
				Original (1)	Current (2)
Class A1 Notes	0.00	0.00	0.00	14.50%	40.86%
Class A2 Notes	78,179,846.67	2,251,644.62	75,928,202.05	14.50%	40.86%
Class B Notes	15,970,000.00	0.00	15,970,000.00	10.25%	28.07%
Class C Notes	15,970,000.00	0.00	15,970,000.00	6.00%	15.27%
Class D Notes	9,390,000.00	0.00	9,390,000.00	3.50%	7.74%
Class E Notes	7,520,000.00	0.00	7,520,000.00	1.50%	1.72%
Class X Notes	0.00	0.00	0.00	0.00%	0.00%
<b>Total</b>	<b>127,029,846.67</b>	<b>2,251,644.62</b>	<b>124,778,202.05</b>		

(1) Determined as follows: Original Principal Balance of all subordinate classes/Total Original Principal Balance

(2) Determined as follows: Ending Principal Balance of all subordinate classes/Total Ending Principal Balance



## Precise Mortgage Funding 2020-1B PLC

### Monthly Investor Report

April 2025

#### Residual Certificates

Notes	ISIN / Common Code	Total Amount Distribution
RC1 Residual Certificates	XS2097428028 / 209742802	0.00
RC2 Residual Certificates	XS2097428291 / 209742829	0.00
ERC Certificates	XS2097437797 / 209743779	6,294.84
<b>Total</b>		<b>6,294.84</b>



## Precise Mortgage Funding 2020-1B PLC

### Monthly Investor Report

April 2025

#### Ratings Information

Notes	ISIN / Common Code	--- Original Ratings ---		--- Ratings Change / Change Date <sup>1</sup> ---			
		Fitch	S&P	Fitch		S&P	
Class A1 Notes	XS2097423060 / 209742306	AAA	AAA	PIF	21-Oct-24	NR	24-Oct-24
Class A2 Notes	XS2097425354 / 209742535	AAA	AAA				
Class B Notes	XS2097426246 / 209742624	AA+	AA+	AAA	21-Oct-24	AAA	21-Apr-22
Class C Notes	XS2097426329 / 209742632	A	AA-	AA+	21-Oct-24	AA	21-Apr-22
Class D Notes	XS2097426832 / 209742683	BBB	A	A+	21-Oct-24	A+	21-Apr-22
Class E Notes	XS2097426915 / 209742691	BB+	BB+			BBB-	21-Apr-22
Class X Notes	XS2097427301 / 209742730	BB+	B	PIF	14-Jul-22	NR	17-Jun-22

<sup>1</sup> Changed ratings provided on this report are based on information provided by the applicable rating agency via electronic transmission. It shall be understood that this transmission will generally have been provided to U.S. Bank Trustees Limited within 30 days of the payment date listed on this statement. Because ratings may have changed during the 30 day window, or may not be being provided by the rating agency in an electronic format and therefore not being updated on this report, U.S. Bank Trustees Limited recommends that investors obtain current rating information directly from the rating agency.



## Precise Mortgage Funding 2020-1B PLC

### Monthly Investor Report

April 2025

Cash Reconciliation			
Available Collections		Distributions	
<b>Available Revenue Receipts</b>		<b>Amounts Distributed by the Issuer</b>	
(a) Revenue Receipts or Calculated Revenue (Excluding ERC Income)	900,091.26	(see Other Required Information page for further detail)	
ERC Income	6,294.84		
(b) Interest accrued on the Issuer Accounts	19,056.58		
(c) Amounts received under the Swap Agreement	0.00		
(d) Class A and Class B Liquidity Reserve Fund Excess Amount	0.00		
(e) Class A and B Liquidity Reserve Fund Ledger <sup>1</sup>	0.00		
(f) General Reserve Fund Excess Amount	0.00		
(g) Reconciliation Amounts deemed to be Available Revenue Receipts	0.00		
(h) Credited to the Deposit Account on the previous IPD	0.00		
(i) Optional Purchase Price	0.00		
(j) Other net income excluding Redemption Receipts	0.00		
(k) Amounts in accordance with item (h) of the Redemption PoP	0.00		
less:			
(l) Third Party Amounts	714.83		
(m) Tax payments not funded from Issuer Profit Ledger	0.00		
(n) Overdraft remedy amounts of DD/Non-DD Collection Accounts	0.00		
(o) Early Repayment Charges	6,294.84		
<b>Available Revenue Receipts</b>	<b>918,433.01</b>		
<b>Available Redemption Receipts</b>		<b>Amounts Distributed by the Issuer</b>	
(a) Redemption Receipts*	2,251,644.62		
(b) Principal Deficiency Ledger	0.00		
(c) Enhanced Amortisation Amount	0.00		
(d) General Reserve Fund remaining <sup>2</sup>	0.00		
(e) Reconciliation Amounts to be Available Redemption Receipts	0.00		
(f) Amount paid into Deposit Account	0.00		
<b>Available Redemption Receipts</b>	<b>2,251,644.62</b>		
Class A and Class B Liquidity Reserve Fund Release Amount	0.00		
General Reserve Fund Liquidity Release Amount	24,383.47		
Principal Addition Amount	0.00		
<b>Total Available Collections</b>	<b>3,194,461.10</b>		
		<b>Distributions</b>	
		<b>Amounts Distributed by the Issuer</b>	
			<b>29,735.60</b>
		<b>Distributions to Noteholders</b>	
		Interest Distribution	692,994.00
		Principal Distribution	2,251,644.62
		<b>Distributions to Noteholders</b>	<b>2,944,638.62</b>
		<b>Other Distributions</b>	
		Enhanced Amortisation Amount	0.00
		Issuer Profit Amount	100.00
		Credit to Class A and Class B Liquidity Reserve Fund Ledger	219,986.88
		Credit to the PDL	0.00
		Credit to General Reserve Fund Ledger	0.00
		Surplus to credit to the Transaction Account	0.00
		Residual Certificates	0.00
		Surplus applied as Available Revenue Funds	0.00
		<b>Other Distributions</b>	<b>220,086.88</b>
		<b>Total Distributions</b>	<b>3,194,461.10</b>

<sup>1</sup> On the Class B Redemption Date only      <sup>2</sup> On the Final Redemption Date only

\* The Redemption Receipts were reallocated as Revenue Receipts by 175351.21 to bring the Class A, B Liquidity Reserve Amount in line with Reserve Fund Amortising Trigger Event



## Precise Mortgage Funding 2020-1B PLC

### Monthly Investor Report

April 2025

#### Other Required Information

##### Amounts Distributed by the Issuer

Note Trustee	0.00
Security Trustee	0.00
Agent Bank, Registrar and Paying Agent	0.00
Cash Manager	0.00
Servicer	29,735.60
Back-up Servicer Facilitator	0.00
Corporate Servicer Provider	0.00
Issuer Account Bank	0.00
Collection Account Bank	0.00
Securitisation Repository	0.00
Third parties	0.00
Transfer Costs	0.00
Swap Provider	0.00
Hedge Subordinated Amounts	0.00
<b>Amounts Distributed by the Issuer</b>	<b>29,735.60</b>

##### Revenue Receipts

Total interest receipts	723,988.87
Total fees	733.75
Total expenses	17.43
Total ERC	6,294.84
Total Revenue Recoveries	0.00
	<b>731,034.89</b>



Precise Mortgage Funding 2020-1B PLC  
Monthly Investor Report

April 2025

Mortgage Principal Analysis

	Current Period	Since Issue
Opening mortgage principal balance - close	375,460,578.05	375,460,578.05
Opening mortgage principal balance - current	128,445,260.68	
<b>Total opening mortgage principal balance</b>	<b>128,445,260.68</b>	<b>375,460,578.05</b>
Unscheduled payments (Redemptions)	2,397,466.90	246,135,521.47
Scheduled payments	29,528.93	4,248,974.89
Principal Losses	0.00	0.00
Principal Recoveries	0.00	0.00
Principal Introduced	70,699.80	1,012,882.96
<b>Closing mortgage principal balance</b>	<b>126,088,964.65</b>	<b>126,088,964.65</b>





## Precise Mortgage Funding 2020-1B PLC

### Monthly Investor Report

April 2025

#### Principal Deficiency Ledger

##### Current Period Principal Deficiency

	Beginning PDL Balance	Deficiency Allocation	PDL Repayment	Ending PDL Balance
Class E Notes PDL	0.00	0.00	0.00	0.00
Class D Notes PDL	0.00	0.00	0.00	0.00
Class C Notes PDL	0.00	0.00	0.00	0.00
Class B Notes PDL	0.00	0.00	0.00	0.00
Class A Notes PDL	0.00	0.00	0.00	0.00
<b>Total</b>	<b>0.00</b>	<b>0.00</b>	<b>0.00</b>	<b>0.00</b>



Precise Mortgage Funding 2020-1B PLC  
Monthly Investor Report

April 2025

Reserve Fund Ledgers

		Credits	Debits
<b><u>Class A and Class B Liquidity Reserve Fund Ledger</u></b>			
Original Class A and Class B Liquidity Reserve Fund Amount	5,143,500.00		
Class A and Class B Liquidity Reserve Fund Amount as at previous IPD/Closing Date	1,451,202.07		
Class A and Class B Liquidity Reserve Fund Required Amount per current IPD	1,671,188.95		
Top ups in quarter		219,986.88	
Drawings in quarter			0.00
Closing Balance	<u>1,671,188.95</u>		
<b><u>General Reserve Fund Ledger</u></b>			
Original Reserve Fund Amount	493,200.00		
General Reserve Fund Required Amount as at previous IPD/Closing Date	493,200.00		
General Reserve Fund Required Amount as at current IPD	493,200.00		
Top ups in quarter		0.00	
Drawings in quarter			24,383.47
Closing Balance	<u>468,816.53</u>		



## Precise Mortgage Funding 2020-1B PLC

### Monthly Investor Report

April 2025

#### Reserve Funds and Principal Allocation

##### General Reserve Fund

(a) on any Interest Payment Date up to and including the Final Redemption Date  
(i) if a Reserve Fund Amortising Trigger Event has not occurred prior to the Calculation Date immediately preceding such Interest Payment Date, an amount equal to 1.5 per cent. of the aggregate current Principal Amount Outstanding of the Collateralised Notes prior to the application of Available Redemption Receipts on such Interest Payment Date, minus the Class A and Class B Liquidity Reserve Fund Required Amount; and

(ii) if a Reserve Fund Amortising Trigger Event has occurred prior to the Calculation Date immediately preceding such Interest Payment Date, an amount equal to 1.5 per cent. of the aggregate current Principal Amount Outstanding of the Collateralised Notes on the Interest Payment Date immediately preceding the date on which the Reserve Fund Amortising Trigger Event occurred (following the application of Available Redemption Receipts on such Interest Payment Date), minus the Class A and Class B Liquidity Reserve Fund Required Amount; and

(b) on each Interest Payment Date on and following the Final Redemption Date, zero;

n.a.

493,200.00

0.00

##### Class A and Class B Liquidity Reserve Fund Required Amount

(a) on any Interest Payment Date falling prior to the Class B Redemption Date:  
(i) if a Reserve Fund Amortising Trigger Event has not occurred prior to the Calculation Date immediately preceding such Interest Payment Date, an amount equal to 1.5 per cent. of the aggregate current Principal Amount Outstanding of the Class A1 Notes, the Class A2 Notes and Class B Notes prior to the application of Available Redemption Receipts on such Interest Payment Date; and

(ii) if a Reserve Fund Amortising Trigger Event has occurred prior to the Calculation Date immediately preceding such Interest Payment Date, an amount equal to 1.5 per cent. of the aggregate current Principal Amount Outstanding of the Class A1 Notes, the Class A2 Notes and Class B Notes on the Interest Payment Date immediately preceding the date on which the Reserve Fund Amortising Trigger Event occurred (following to the application of Available Redemption Receipts on such Interest Payment Date); and

(iii) on any Interest Payment Date falling on or after the Class B Redemption Date, zero;

n.a.

1,671,188.95

0.00

##### Principal Addition Amount

Available Revenue Receipts & Liquidity Release Amount

Amounts due on the Revenue Waterfall from item [(a)] to [(f)] and [(h)]

Senior Expenses Deficit

918,433.01

520,824.21

0.00

**Principal Addition Amount**

0.00



## Precise Mortgage Funding 2020-1B PLC

### Monthly Investor Report

April 2025

#### Swap Transaction Details

##### Fixed Rate Issuer to Swap Counterparty

Period Start Date (included)	17-Mar-25
Period End date (excluded)	16-Apr-25
Day Count Fraction	0.082

Fixed Rate	0.65000%
------------	----------

Swap Notional Amount	0.00
----------------------	------

<b>Total Swap Payment by Issuer to Swap Counterparty</b>	<b>0.00</b>
--	-------------

##### Floating Rate Swap Counterparty to Issuer

Period Start Date (included)	17-Mar-25
Period End date (excluded)	16-Apr-25
Day Count Fraction	0.082

Floating Rate	4.46326%
---------------	----------

Swap Notional Amount	0.00
----------------------	------

<b>Total Swap Payment by Swap Counterparty to Issuer</b>	<b>0.00</b>
--	-------------

<b>Net Payment Due (Issuer/Swap Counterparty)</b>	<b>0.00</b>
---	-------------



## Precise Mortgage Funding 2020-1B PLC

### Monthly Investor Report

April 2025

#### Triggers

<u>Event of Default</u>	<u>Breach (Y/N)</u>
(a) subject to Condition 18 (Subordination by Deferral), if default is made in the payment of any principal or interest due in respect of the Notes and the default continues for: (i) a period of five Business Days in the case of principal, or (ii) three Business Days in the case of interest; or	No
(b) if the Issuer fails to perform or observe any of its other obligations under these Conditions or any Transaction Document to which it is a party and the failure continues for a period of 15 days (or such longer period as the Note Trustee may permit) (except that in any case where the Note Trustee considers the failure to be incapable of remedy, then no continuation or notice as is aforementioned will be required) following the service by the Note Trustee on the Issuer of notice requiring the same to be remedied; or	No
(c) if any representation or warranty made by the Issuer under any Transaction Document is incorrect when made and the matters giving rise to such misrepresentation are not remedied within a period of 15 days (or such longer period as the Note Trustee may permit) (except that in any case where the Note Trustee considers the matters giving rise to such misrepresentation to be incapable of remedy, then no continuation or notice as is hereinafter mentioned will be required) following the service by the Note Trustee on the Issuer of notice requiring the same to be remedied; or	No
(d) if any order is made by any competent court or any resolution is passed for the winding up or dissolution of the Issuer, save for the purposes of reorganisation on terms approved in writing by the Note Trustee or by Extraordinary Resolution of the Noteholders; or	No
(e) if (i) the Issuer ceases or threatens to cease to carry on the whole or a substantial part of its business, save for the purposes of reorganisation on terms approved in writing by the Note Trustee or by Extraordinary Resolution of the Noteholders, or (ii) the Issuer stops or threatens to stop payment of, or is unable to, or admits inability to, pay its debts (or any class of its debts) as they fall due or the value of its assets falls to less than the amount of its liabilities (taking into account its contingent and prospective liabilities) or (iii) the Issuer is deemed unable to pay its debts pursuant to or for the purposes of any applicable law or is adjudicated or found bankrupt or insolvent; or	No
(f) if proceedings are initiated against the Issuer under any applicable liquidation, insolvency, composition, reorganisation or other similar laws or an application is made (or documents filed with the court) for the appointment of an administrative or other receiver, manager, administrator or other similar official, or an administrative or other receiver, manager, administrator or other similar official is appointed, in relation to the Issuer or, as the case may be, in relation to the whole or any part of the undertaking or assets of the Issuer, and in any such case (other than the appointment of an administrator or an administrative receiver appointed following presentation of a petition for an administration order), unless initiated by the Issuer, is not discharged within 30 days; or	No
(g) if the Issuer (or its directors or shareholders) initiates or consents to judicial proceedings relating to itself under any applicable liquidation, insolvency, composition, reorganisation or other similar laws or makes a conveyance or assignment for the benefit of, or enters into any composition or other arrangement with, its creditors generally (or any class of its creditors) or takes steps with a view to obtaining a moratorium in respect of any of its indebtedness or any meeting is convened to consider a proposal for an arrangement or composition with its creditors generally (or any class of its creditors).	No



## Precise Mortgage Funding 2020-1B PLC

### Monthly Investor Report

April 2025

#### Triggers

##### Mandatory Redemption of the Notes

8.3 (a) Optional Purchase Price received			0.00
8.3 (b) Ten Per cent clean up call			No
	<b>Current</b>	<b>Trigger</b>	
	126,088,964.65	37,578,000.00	
8.4 Taxation or Other Reasons			0.00



## Precise Mortgage Funding 2020-1B PLC

### Monthly Investor Report

April 2025

Portfolio Performance								
As at: 31/03/2025								
	This Period				Last Period			
	No.	Balance	Arrears	%	No.	Balance	Arrears	%
<b>Total</b>								
No. of Loans Paying => Monthly CMS	614	123,714,492.41	11,428.34	98.12%	634	125,888,679.35	18,400.44	98.01%
No. of Loans Paying => 75% Monthly CMS	3	786,701.45	6,418.52	0.62%	4	1,570,813.78	12,605.68	1.22%
No. of Loans Paying < 75% Monthly CMS	1	381,480.89	3,551.16	0.30%	0	0.00	0.00	0.00%
No. of Loans That Made No Payment	4	1,206,289.90	52,103.06	0.96%	3	985,767.55	40,857.47	0.77%
<b>Total</b>	<b>622</b>	<b>126,088,964.65</b>	<b>73,501.08</b>	<b>100.00%</b>	<b>641</b>	<b>128,445,260.68</b>	<b>71,863.59</b>	<b>100.00%</b>
% Original Principal Balance				<b>32.95%</b>				<b>33.53%</b>
% Outstanding Principal Balance				<b>98.12%</b>				<b>98.01%</b>
<b>1 to 2 Months</b>								
No. of Loans Paying => Monthly CMS	3	446,086.66	5,550.17	0.35%	3	564,796.93	7,885.38	0.44%
No. of Loans Paying => 75% Monthly CMS	0	0.00	0.00	0.00%	2	869,176.53	8,959.00	0.68%
No. of Loans Paying < 75% Monthly CMS	1	381,480.89	3,551.16	0.30%	0	0.00	0.00	0.00%
No. of Loans That Made No Payment	2	640,086.16	3,569.84	0.51%	1	437,899.98	2,499.73	0.34%
<b>Total</b>	<b>6</b>	<b>1,467,653.71</b>	<b>12,671.17</b>	<b>1.16%</b>	<b>6</b>	<b>1,871,873.44</b>	<b>19,344.11</b>	<b>1.46%</b>
% Original Principal Balance				<b>0.39%</b>				<b>0.50%</b>
% Outstanding Principal Balance				<b>1.16%</b>				<b>1.46%</b>
<b>2 to 3 Months</b>								
No. of Loans Paying => Monthly CMS	0	0.00	0.00	0.00%	1	345,822.82	6,166.70	0.27%
No. of Loans Paying => 75% Monthly CMS	1	487,695.64	6,380.17	0.39%	0	0.00	0.00	0.00%
No. of Loans Paying < 75% Monthly CMS	0	0.00	0.00	0.00%	0	0.00	0.00	0.00%
No. of Loans That Made No Payment	0	0.00	0.00	0.00%	0	0.00	0.00	0.00%
<b>Total</b>	<b>1</b>	<b>487,695.64</b>	<b>6,380.17</b>	<b>0.39%</b>	<b>1</b>	<b>345,822.82</b>	<b>6,166.70</b>	<b>0.27%</b>
% Original Principal Balance				<b>0.13%</b>				<b>0.09%</b>
% Outstanding Principal Balance				<b>0.39%</b>				<b>0.27%</b>



## Precise Mortgage Funding 2020-1B PLC

### Monthly Investor Report

April 2025

#### Portfolio Performance

As at: 31/03/2025

	This Period				Last Period			
	No.	Balance	Arrears	%	No.	Balance	Arrears	%
<b>3 to 4 Months</b>								
No. of Loans Paying => Monthly CMS	0	0.00	0.00	0.00%	2	279,781.40	4,348.36	0.22%
No. of Loans Paying => 75% Monthly CMS	0	0.00	0.00	0.00%	0	0.00	0.00	0.00%
No. of Loans Paying < 75% Monthly CMS	0	0.00	0.00	0.00%	0	0.00	0.00	0.00%
No. of Loans That Made No Payment	1	345,822.82	8,399.99	0.27%	0	0.00	0.00	0.00%
<b>Total</b>	<b>1</b>	<b>345,822.82</b>	<b>8,399.99</b>	<b>0.27%</b>	<b>2</b>	<b>279,781.40</b>	<b>4,348.36</b>	<b>0.22%</b>
% Original Principal Balance				<b>0.09%</b>				<b>0.07%</b>
% Outstanding Principal Balance				<b>0.27%</b>				<b>0.22%</b>
<b>4+ Months</b>								
No. of Loans Paying => Monthly CMS	0	0.00	0.00	0.00%	0	0.00	0.00	0.00%
No. of Loans Paying => 75% Monthly CMS	0	0.00	0.00	0.00%	0	0.00	0.00	0.00%
No. of Loans Paying < 75% Monthly CMS	0	0.00	0.00	0.00%	0	0.00	0.00	0.00%
No. of Loans That Made No Payment	1	220,380.92	40,133.23	0.17%	1	220,380.92	38,357.74	0.17%
<b>Total</b>	<b>1</b>	<b>220,380.92</b>	<b>40,133.23</b>	<b>0.17%</b>	<b>1</b>	<b>220,380.92</b>	<b>38,357.74</b>	<b>0.17%</b>
% Original Principal Balance				<b>0.06%</b>				<b>0.06%</b>
% Outstanding Principal Balance				<b>0.17%</b>				<b>0.17%</b>

NB: The Administrator does not report Days in Arrears but Month in Arrears as referred to by the deal documentation





## Precise Mortgage Funding 2020-1B PLC

### Monthly Investor Report

April 2025

#### Collateral Report

As at: 31/03/2025

	<u>This Period</u>	<u>Last Period</u>
Total Arrears Balance (1 month and over)	67,584.56	68,216.91
Total Arrears due	73,501.08	71,863.59

	<u>At Close</u>	<u>This Period</u>	<u>Last Period</u>
Original Principal Balance as at close	375,460,578.05		
Total Original Number of Loans	2,277		
Outstanding Principal Balance as at prior month end		126,088,964.65	128,445,260.68
Total Current Number of Loans		622	641
Total number of performing loans		613	631
Total value of performing loans		123,567,411.56	125,727,402.10
Total number of 3+ months		2	3
Total value of 3+ months		566,203.74	500,162.32
Percentage 3+ months on Original Balance		0.15%	0.13%
Percentage 3+ months on Outstanding Balance		0.45%	0.39%
Total Value of Arrears Cases		2,521,553.09	2,717,858.58
Total Number of Arrears Cases		9	10
% Original Principal Balance		0.67%	0.72%
% Outstanding Principal Balance		2.00%	2.12%



## Precise Mortgage Funding 2020-1B PLC

### Monthly Investor Report

April 2025

#### Collateral Report

As at: 31/03/2025

	<u>This Period</u>	<u>Last Period</u>
<b>REPOSSESSIONS</b>		
Number of Repossessions this Period	0	0
Repossession Cured	0	0
Total Number of Properties Unsold	0	0
Principal Balance Unsold	0.00	0.00
Principal Balance Cured	0.00	0.00
% Original Principal Balance	0.00%	0.00%
% Outstanding Principal Balance	0.00%	0.00%

	<u>This Period</u>	<u>Last Period</u>
<b>SALES OF REPOSSESSIONS</b>		
	<u>Current Balance</u>	<u>Current Balance</u>
Total Number of Repossessions Sold since close	0	0
Total Value of Property Sold	0.00	0.00
Value of Properties Repossessed this period	0.00	0.00
Cumulative Value of Properties Repossessed since close	0.00	0.00
Number of Properties sold this period	0	0
Value of Properties sold this period	0.00	0.00
Cumulative Loss on Sale	0.00	0.00
Cumulative Loss on Sale % of Original Principal Balance	0.00%	0.00%
Cumulative Redemption Shortfalls incurred	0.00	0.00
Period Losses	0.00	0.00
Cumulative Losses	0.00	0.00

<b>OTHER LOSSES</b>
Cumulative ERC losses incurred
Cumulative Fee losses incurred
Cumulative Expense losses incurred



## Precise Mortgage Funding 2020-1B PLC

### Monthly Investor Report

April 2025

#### Prepayment Rate (CPR)

##### Average Constant Prepayment Rate (CPR) Since Issue with Calculation

Average CPR speed is the amount expressed as an annualised percentage of principal prepaid in excess of scheduled repayments. The average CPR speed is calculated by first dividing the Current Residential Mortgage Loan Principal Balance (i.e. the actual balance) by the Scheduled Residential Mortgage Loan Principal Balance assuming no prepayments have been made (i.e. only scheduled repayments have been made). The quotient is then raised to a power whereby the exponent is the quantity twelve divided by the number of months since issue. Subtract this result from one then multiply it by one hundred (100) to determine the Average CPR speed.

This Period

Last Period

18.59%

18.57%

The calculation is expressed as follows:

$$CPR_{Avg} = 100 \times \left[ 1 - \left( \frac{\text{Current Residential Mortgage Loan Principal Balance}}{\text{Scheduled Residential Mortgage Loan Principal Balance}} \right)^{\frac{12}{\text{months since}}}} \right]$$

##### 3 Month Periodical Constant Prepayment Rate (CPR) with Calculation (Annualised)

Annualised Periodical CPR speed is the amount expressed as a periodical percentage of principal prepaid in excess of scheduled repayments. The Periodical CPR speed is calculated by first dividing the Current Residential Mortgage Loan Principal Balance (i.e. the actual balance) by the Scheduled Residential Mortgage Loan Principal Balance in the period assuming no prepayments have been made (i.e. only scheduled repayments have been made). This quotient is then raised to a power whereby the exponent is the quantity twelve divided by the number of months in the period. Subtract this result from the one then multiply it by one hundred (100) to determined the Periodical CPR speed.

25.48%

32.84%

The calculation is expressed as follows:

$$\text{Periodical CPR} = 100 \times \left[ 1 - \left( \frac{\text{Current Residential Mortgage Loan Principal Balance}}{\text{Scheduled Residential Mortgage Loan Principal Balance}} \right)^{\frac{12}{\text{months in period}}}} \right]$$

##### 12 Month Periodical Constant Prepayment Rate (CPR) with Calculation (Annualised)

Annualised Periodical CPR speed is the amount expressed as a periodical percentage of principal prepaid in excess of scheduled repayments. The Periodical CPR speed is calculated by first dividing the Current Residential Mortgage Loan Principal Balance (i.e. the actual balance) by the Scheduled Residential Mortgage Loan Principal Balance in the period assuming no prepayments have been made (i.e. only scheduled repayments have been made). This quotient is then raised to a power whereby the exponent is the quantity twelve divided by the number of months in the period. Subtract this result from the one then multiply it by one hundred (100) to determined the Periodical CPR speed.

25.88%

27.43%

The calculation is expressed as follows:

$$\text{Periodical CPR} = 100 \times \left[ 1 - \left( \frac{\text{Current Residential Mortgage Loan Principal Balance}}{\text{Scheduled Residential Mortgage Loan Principal Balance}} \right)^{\frac{12}{\text{months in period}}}} \right]$$



## Precise Mortgage Funding 2020-1B PLC

### Monthly Investor Report

April 2025

Pre-Enforcement Revenue Priority of Payments		
	This IPD	Last IPD
<b><u>Available Revenue Receipts</u></b>	<b>942,816.48</b>	<b>852,477.61</b>
(a) first, in or towards satisfaction pro rata and pari passu according to the respective amounts thereof of:		
(i) any fees, costs, charges, Liabilities, expenses and all other amounts then due to the Note Trustee and any Appointee under the provisions of the Trust Deed and the other Transaction Documents together with (if payable) VAT thereon as provided therein; and	0.00	0.00
(ii) any fees, costs, charges, Liabilities, expenses and all other amounts then due to the Security Trustee and any Appointee under the provisions of the Deed of Charge and the other Transaction Documents together with (if payable) VAT thereon as provided therein;	0.00	0.00
(b) second, in or towards satisfaction pro rata and pari passu according to the respective amounts thereof (in each case without double counting) of:		
(i) any remuneration then due and payable to the Agent Bank, the Registrar and the Paying Agent and any fees, costs, charges, Liabilities and expenses then due to them under the provisions of the Agency Agreement, together with (if payable) VAT thereon as provided therein;	0.00	0.00
(ii) any amounts then due and payable to the Cash Manager and any fees, costs, charges, Liabilities and expenses then due under the provisions of the Cash Management Agreement, together with VAT (if payable) thereon as provided therein;	0.00	0.00
(iii) any amounts then due and payable to the Servicer and any fees (including the Base Fee), costs, charges, Liabilities and expenses then due under the provisions of the Servicing Agreement, inclusive of VAT (if payable) as provided therein;	29,735.60	27,562.58
(iv) any amounts then due and payable to the Back-Up Servicer Facilitator and any fees, costs, charges, Liabilities and expenses then due under the provisions of the Servicing Agreement, together with (if payable) VAT thereon as provided therein;	0.00	0.00
(v) any amounts then due and payable to the Corporate Services Provider and any fees, costs, charges, Liabilities and expenses then due under the provisions of the Corporate Services Agreement, together with (if payable) VAT thereon as provided therein;	0.00	11,896.35
(vi) any amounts then due and payable to the Issuer Account Bank and any custodian and any fees, costs, charges, Liabilities and expenses then due under the provisions of the Bank Account Agreement and any Custody Agreement, together with (if applicable) VAT thereon as provided therein;	0.00	0.00
(vii) any amounts then due and payable to the Collection Account Bank and any fees, costs, charges, Liabilities and expenses then due under the provisions of the Collection Account Agreement, together with (if applicable) VAT thereon as provided therein; and	0.00	0.00
(viii) if applicable, the fees, costs, liabilities and expenses of the securitisation repository or any other third-party website provider;	0.00	0.00



## Precise Mortgage Funding 2020-1B PLC

### Monthly Investor Report

April 2025

#### Pre-Enforcement Revenue Priority of Payments

(c) third, in or towards satisfaction pro rata and pari passu according to the respective amounts thereof of:		
(i) any amounts due and payable by the Issuer to third parties and incurred without breach by the Issuer of the Transaction Documents to which it is a party (and for which payment has not been provided for elsewhere) and any amounts required to pay or discharge any liability of the Issuer for corporation tax of the Issuer (but only to the extent not capable of being satisfied out of amounts retained by the Issuer under item (e) below); and	0.00	6,343.50
(ii) any Transfer Costs which the Servicer has failed to pay pursuant to Clause 19.3 of the Servicing Agreement;	0.00	0.00
(d) fourth, to provide for amounts due on the relevant Swap Payment Date, to pay, in or towards satisfaction of any amounts due to the Swap Provider in respect of the Swap Agreement (including any termination payment due and payable by the Issuer to the extent it is not satisfied by the payment by the Issuer to the Swap Provider of any Replacement Swap Premium or from the Swap Collateral Account Priority of Payments but excluding, if applicable, any related Hedge Subordinated Amounts);	0.00	0.00
(e) fifth, to pay the Issuer an amount equal to £100 to be retained by the Issuer as profit in respect of the business of the Issuer (the Issuer Profit Amount);	100.00	100.00
(f) sixth, to provide for amounts due on the relevant Interest Payment Date, to pay, pro rata and pari passu, interest due and payable on the Class A1 Notes and the Class A2 Notes;		
Class A1 Notes Interest	0.00	0.00
Class A2 Notes Interest	403,854.63	388,015.38
(g) seventh, (so long as the Class A1 Notes or the Class A2 Notes remain outstanding following such Interest Payment Date), to credit the Class A Principal Deficiency Sub-Ledger in an amount sufficient to eliminate any debit thereon (such amounts to be applied in repayment of principal as Available Redemption Receipts);	0.00	0.00
(h) eighth, to provide for amounts due on the relevant Interest Payment Date, to pay, pro rata and pari passu, interest due and payable on the Class B Notes;	87,133.98	81,306.79
(i) ninth, to credit the Class A and Class B Liquidity Reserve Fund Ledger up to the Class A and Class B Liquidity Reserve Fund Required Amount;	219,986.88	0.00
(j) tenth, (so long as the Class B Notes remain outstanding following such Interest Payment Date), to credit the Class B Principal Deficiency Sub-Ledger in an amount sufficient to eliminate any debit thereon (such amounts to be applied in repayment of principal as Available Redemption Receipts);	0.00	0.00
(k) eleventh, to provide for amounts due on the relevant Interest Payment Date, to pay, pro rata and pari passu, interest due and payable on the Class C Notes;	92,056.24	85,900.90
(l) twelfth, (so long as the Class C Notes remain outstanding following such Interest Payment Date), to credit the Class C Principal Deficiency Sub-Ledger in an amount sufficient to eliminate any debit thereon (such amounts to be applied in repayment of principal as Available Redemption Receipts);	0.00	0.00
(m) thirteenth, to provide for amounts due on the relevant Interest Payment Date, to pay, pro rata and pari passu, interest due and payable on the Class D Notes;	57,021.17	53,209.02



## Precise Mortgage Funding 2020-1B PLC

### Monthly Investor Report

April 2025

Pre-Enforcement Revenue Priority of Payments			
(n)	fourteenth, (so long as the Class D Notes remain outstanding following such Interest Payment Date), to credit the Class D Principal Deficiency Sub-Ledger in an amount sufficient to eliminate any debit thereon (such amounts to be applied in repayment of principal as Available Redemption Receipts);	0.00	0.00
(o)	fifteenth, to provide for amounts due on the relevant Interest Payment Date, to pay, pro rata and pari passu, interest due and payable on the Class E Notes;	52,927.98	49,390.85
(p)	sixteenth, (so long as the Class E Notes remain outstanding following such Interest Payment Date), to credit the Class E Principal Deficiency Sub-Ledger in an amount sufficient to eliminate any debit thereon (such amounts to be applied in repayment of principal as Available Redemption Receipts);	0.00	0.00
(q)	seventeenth, to credit the General Reserve Fund Ledger up to the General Reserve Fund Required Amount;	0.00	20,243.89
(r)	eighteenth, to provide for amounts due on the relevant Interest Payment Date, to pay in accordance with the terms of the Swap Agreement to the Swap Provider in respect of any Hedge Subordinated Amounts (to the extent not satisfied by payment to the Swap Provider by the Issuer of any applicable Replacement Swap Premium or from the Swap Collateral Account Priority of Payments);	0.00	0.00
(s)	nineteenth, on any Interest Payment Date occurring on or after the Optional Redemption Date or the Final Redemption Date an amount equal to the lesser of: (i) all remaining amounts (if any); and (ii) the amount required by the Issuer to pay in full all amounts payable under items (a) to (g) (inclusive) of the Pre-Enforcement Redemption Priority of Payments, less any Available Redemption Receipts (other than item (c) of the definition thereof) otherwise available to the Issuer, to be applied as Available Redemption Receipts;	0.00	128,508.35
(t)	twentieth, to provide for amounts due on the relevant Interest Payment Date, to pay, pro rata and pari passu, interest due and payable on the Class X Notes;	0.00	0.00
(u)	twenty-first, to provide for amounts due on the relevant Interest Payment Date, to pay, pro rata and pari-passu, principal due and payable on the Class X Notes until the Principal Amount Outstanding on the Class X Notes has been reduced to zero;	0.00	0.00
(v)	twenty-second, on any Interest Payment Date falling within a Determination Period, all remaining amounts to be credited to the Deposit Account to be applied on the next Interest Payment Date as Available Revenue Receipts; and	0.00	0.00
(w)	twenty-third, on any Interest Payment Date prior to (but excluding) the Optional Redemption Date any excess amounts pro rata and pari passu as RC1 Payments to the holders of the RC1 Residual Certificates and thereafter, any excess amounts pro rata and pari passu as RC2 Payments to the holders of the RC2 Residual Certificates.		
	RC1 Payments	0.00	0.00
	RC2 Payments	0.00	0.00
	<b>Total paid</b>	<b>942,816.48</b>	<b>852,477.61</b>
	Excess Spread (%)	0.00%	
	ERC Certificates	6,294.84	



## Precise Mortgage Funding 2020-1B PLC

### Monthly Investor Report

April 2025

Pre-Enforcement Redemption Priority of Payments		
	This IPD	Last IPD
<b><u>Available Redemption Receipts</u></b>	<b>2,251,644.62</b>	<b>2,596,958.01</b>
(a) first, any Principal Addition Amounts to be applied to meet any Senior Expenses Deficit;	0.00	0.00
(b) second, in or towards repayment, pro rata and pari passu, of principal amounts outstanding on the Class A1 Notes until the Principal Amount Outstanding on the Class A1 Notes has been reduced to zero;	0.00	0.00
(c) third, in or towards repayment, pro rata and pari passu, of principal amounts outstanding on the Class A2 Notes until the Principal Amount Outstanding on the Class A2 Notes has been reduced to zero;	2,251,644.62	2,596,958.01
(d) fourth, in or towards repayment, pro rata and pari passu, of principal amounts outstanding on the Class B Notes until the Principal Amount Outstanding on the Class B Notes has been reduced to zero;	0.00	0.00
(e) fifth, in or towards repayment, pro rata and pari passu, of principal amounts outstanding on the Class C Notes until the Principal Amount Outstanding on the Class C Notes has been reduced to zero;	0.00	0.00
(f) sixth, in or towards repayment, pro rata and pari passu, of principal amounts outstanding on the Class D Notes until the Principal Amount Outstanding on the Class D Notes has been reduced to zero;	0.00	0.00
(g) seventh, in or towards repayment, pro rata and pari passu, of principal amounts outstanding on the Class E Notes until the Principal Amount Outstanding on the Class E Notes has been reduced to zero;	0.00	0.00
(h) eighth, any excess amounts as Available Revenue Receipts.	0.00	0.00
<b>Total paid</b>	<b><u>2,251,644.62</u></b>	<b><u>2,596,958.01</u></b>



## Precise Mortgage Funding 2020-1B PLC

### Monthly Investor Report

April 2025

Swap Collateral Account Priority of Payments		
	This IPD	Last IPD
<b><u>Amounts and securities standing to the credit of each Swap Collateral Account</u></b>	<b>0.00</b>	<b>0.00</b>
(a) to pay an amount equal to any Swap Tax Credits received by the Issuer to the relevant Swap Provider;	0.00	0.00
(b) prior to the designation of an Early Termination Date (as defined in the Swap Agreement, the "Early Termination Date") in respect of the Swap Agreement, solely in or towards payment or discharge of any Return Amounts (as defined in the Swap Credit Support Annex), Interest Amounts and Distributions (as defined in the Swap Credit Support Annex), on any day, directly to the Swap Provider;	0.00	0.00
(c) following the designation of an Early Termination Date in respect of the Swap Agreement where (A) such Early Termination Date has been designated following a Swap Provider Default or Swap Provider Downgrade Event and (B) the Issuer enters into a Replacement Swap Agreement in respect of the Swap Agreement on or around the Early Termination Date of the Swap Agreement, on the later of the day on which such Replacement Swap Agreement is entered into, the day on which a termination payment (if any) payable to the Issuer has been received and the day on which a Replacement Swap Premium (if any) payable to the Issuer has been received, in the following order of priority:		
(i) first, in or towards payment of a Replacement Swap Premium (if any) payable by the Issuer to a replacement swap provider in order to enter into a Replacement Swap Agreement with the Issuer with respect to the Swap Agreement being terminated;	0.00	0.00
(ii) second, in or towards payment of any termination payment due to the outgoing Swap Provider; and	0.00	0.00
(iii) third, the surplus (if any) on such day to be transferred to the Deposit Account to be applied as Available Revenue Receipts;	0.00	0.00
(d) following the designation of an Early Termination Date in respect of the Swap Agreement where: (A) such Early Termination Date has been designated otherwise than as a result of one of the events specified at item (c)(A) above, and (B) the Issuer enters into a Replacement Swap Agreement in respect of the Swap Agreement on or around the Early Termination Date of the Swap Agreement, on the later of the day on which such Replacement Swap Agreement is entered into, the day on which a termination payment (if any) payable to the Issuer has been received and the day on which a Replacement Swap Premium (if any) payable to the Issuer has been received, in the following order of priority:		
(i) first, in or towards payment of any termination payment due to the outgoing Swap Provider;	0.00	0.00
(ii) second, in or towards payment of a Replacement Swap Premium (if any) payable by the Issuer to a replacement swap provider in order to enter into a Replacement Swap Agreement with the Issuer with respect to the Swap Agreement being terminated; and	0.00	0.00
(iii) third, any surplus on such day to be transferred to the Deposit Account to be applied as Available Revenue Receipts;	0.00	0.00
(e) following the designation of an Early Termination Date in respect of the Swap Agreement for any reason where the Issuer does not enter into a Replacement Swap Agreement in respect of the Swap Agreement on or around the Early Termination Date of the Swap Agreement and, on the date on which the relevant payment is due, in or towards payment of any termination payment due to the outgoing Swap Provider; and	0.00	0.00





## Precise Mortgage Funding 2020-1B PLC

### Monthly Investor Report

April 2025

#### Swap Collateral Account Priority of Payments

- (f) following payments of amounts due pursuant to item (e) above, if amounts remain standing to the credit of a Swap Collateral Account, such amounts may be applied only in accordance with the following provisions:

(i) first, in or towards payment of a Replacement Swap Premium (if any) payable by the Issuer to a replacement swap provider in order to enter into a Replacement Swap Agreement with the Issuer with respect to the Swap Agreement; and

0.00

0.00

(ii) second, any surplus remaining after payment of such Replacement Swap Premium to be transferred to the Deposit Account to be applied as Available Revenue Receipts, provided that for so long as the Issuer does not enter into a Replacement Swap Agreement with respect to the Swap Agreement, on each Swap Payment Date, the Issuer (or the Cash Manager on its behalf) will be permitted to withdraw an amount from the Swap Collateral Account (which shall be debited to the Swap Collateral Ledger), equal to the excess of the Swap Provider Swap Amount over the Issuer Swap Amount which would have been paid by the Swap Provider to the Issuer on such Swap Payment Date but for the designation of an Early Termination Date under the Swap Agreement, such surplus to be transferred to the Deposit Account to be applied as Available Revenue Receipts; and provided further that for so long as the Issuer does not enter into a Replacement Swap Agreement with respect to the Swap Agreement on or prior to the earlier of: (A) the Calculation Date immediately before the Interest Payment Date on which the Principal Amount Outstanding of all Collateralised Notes would be reduced to zero (taking into account any Swap Collateral Account Surplus to be applied as Available Revenue Receipts on such Interest Payment Date); or (B) the day on which an Enforcement Notice is given pursuant to Condition 11 (Events of Default); or (C) the date on which the Current Balance of the Fixed Rate Loans (excluding any Enforced Loans) is reduced to zero, then the amount standing to the credit of such Swap Collateral Account on such day shall be transferred to the Deposit Account to be applied as Available Revenue Receipts as soon as reasonably practicable thereafter.

0.00

0.00

Total paid

0.00

0.00



## Precise Mortgage Funding 2020-1B PLC

### Monthly Investor Report

April 2025

Post-Enforcement Priority of Payments		
	This IPD	Last IPD
<b><u>Available Funds</u></b>	<b>0.00</b>	<b>0.00</b>
(a) first, in or towards satisfaction, pro rata and pari passu, according to the respective amounts thereof of:		
(i) any fees, costs, charges, Liabilities, expenses and all other amounts then due and payable to the Note Trustee, Receiver and any Appointee under the provisions of the Trust Deed and the other Transaction Documents, together with (if payable) VAT thereon as provided therein; and	0.00	0.00
(ii) any fees, costs, charges, Liabilities, expenses and all other amounts then due and payable to the Security Trustee, Receiver and any Appointee under the provisions of the Deed of Charge and the other Transaction Documents, together with (if payable) VAT thereon as provided therein;	0.00	0.00
(b) second, in or towards satisfaction, pro rata and pari passu, according to the respective amounts thereof of:		
(i) any remuneration then due and payable to the Agent Bank, the Registrar and the Paying Agent and any costs, charges, Liabilities and expenses then due and payable to them under the provisions of the Agency Agreement, together with (if payable) VAT thereon as provided therein;	0.00	0.00
(ii) any amounts then due and payable to the Cash Manager and any fees, costs, charges, Liabilities and expenses then due under the provisions of the Cash Management Agreement, together with VAT (if payable) thereon as provided therein;	0.00	0.00
(iii) any amounts then due and payable to the Servicer and any fees (including the Base Fee), costs, charges, Liabilities and expenses then due under the provisions of the Servicing Agreement, inclusive of VAT (if payable) as provided therein;	0.00	0.00
(iv) any amounts then due and payable to the Back-Up Servicer Facilitator and any fees, costs, charges, Liabilities and expenses then due under the provisions of the Servicing Agreement, together with (if payable) VAT thereon as provided therein;	0.00	0.00
(v) any amounts then due and payable to the Corporate Services Provider and any fees, costs, charges, Liabilities and expenses then due and payable to the Corporate Services Provider under the provisions of the Corporate Services Agreement together with (if payable) VAT thereon as provided therein;	0.00	0.00
(vi) any amounts then due and payable to the Issuer Account Bank and any custodian and any fees, costs, charges, Liabilities and expenses then due and payable to the Issuer Account Bank under the provisions of the Bank Account Agreement and any Custody Agreement, together with (if payable) VAT thereon as provided therein;	0.00	0.00
(vii) any amounts then due and payable to the Collection Account Bank and any fees, costs, charges, Liabilities and expenses then due under the provisions of the Collection Account Agreement, together with (if applicable) VAT thereon as provided therein; and	0.00	0.00
(viii) if applicable, the fees, costs, liabilities and expenses of the securitisation repository or any other third-party website provider;	0.00	0.00



## Precise Mortgage Funding 2020-1B PLC

### Monthly Investor Report

April 2025

Post-Enforcement Priority of Payments		
(c) third, to pay in or towards satisfaction of any amounts due to the Swap Provider in respect of the Swap Agreement (including any termination payment due and payable by the Issuer to the extent it is not satisfied by any payments by the Issuer to the Swap Provider under the Swap Collateral Account Priority of Payments but excluding, if applicable, any related Hedge Subordinated Amounts);	0.00	0.00
(d) fourth, to pay, pro rata and pari passu, according to the respective outstanding amounts thereof interest and principal due and payable on the Class A1 Notes and the Class A2 Notes until the Principal Amount Outstanding on the Class A1 Notes and the Class A2 Notes has been reduced to zero;		
Class A1 Notes Interest	0.00	0.00
Class A2 Notes Interest	0.00	0.00
Class A1 Notes Principal	0.00	0.00
Class A2 Notes Principal	0.00	0.00
(e) fifth, to pay, pro rata and pari passu, according to the respective outstanding amounts thereof, interest and principal due and payable on the Class B Notes until the Principal Amount Outstanding on the Class B Notes has been reduced to zero;		
Class B Notes Interest	0.00	0.00
Class B Notes Principal	0.00	0.00
(f) sixth, to pay, pro rata and pari passu, according to the respective outstanding amounts thereof, interest and principal due and payable on the Class C Notes until the Principal Amount Outstanding on the Class C Notes has been reduced to zero;		
Class C Notes Interest	0.00	0.00
Class C Notes Principal	0.00	0.00
(g) seventh, to pay, pro rata and pari passu, according to the respective outstanding amounts thereof, interest and principal due and payable on the Class D Notes until the Principal Amount Outstanding on the Class D Notes has been reduced to zero;		
Class D Notes Interest	0.00	0.00
Class D Notes Principal	0.00	0.00
(h) eighth, to pay, pro rata and pari passu, according to the respective outstanding amounts thereof, interest and principal due and payable on the Class E Notes until the Principal Amount Outstanding on the Class E Notes has been reduced to zero;		
Class D Notes Interest	0.00	0.00
Class D Notes Principal	0.00	0.00
(i) ninth, to pay in accordance with the terms of the Swap Agreement to the Swap Provider in respect of any Hedge Subordinated Amounts (to the extent not satisfied by payment to the Swap Provider by the Issuer of any applicable amount under the Swap Collateral Account Priority of Payments);	0.00	0.00
(j) tenth, to pay, pro rata and pari passu, according to the respective outstanding amounts thereof, interest and principal due and payable on the Class X Notes until the Principal Amount Outstanding on the Class X Notes has been reduced to zero;		
Class X Notes Interest	0.00	0.00
Class X Notes Principal	0.00	0.00



## Precise Mortgage Funding 2020-1B PLC

### Monthly Investor Report

April 2025

Post-Enforcement Priority of Payments		
(k) eleventh, to pay, pro rata and pari passu, amounts due and payable to third parties (if any);	0.00	0.00
(l) twelfth, to pay the Issuer Profit Amount and any corporation tax of the Issuer not otherwise able to be paid from amounts standing to the credit of the Issuer Profit Ledger; and	0.00	0.00
(m) thirteenth, on any Interest Payment Date prior to (but excluding) the Optional Redemption Date to pay any excess amounts, pro rata and pari passu as RC1 Payments to the holders of the RC1 Residual Certificates and thereafter to pay any excess amounts, pro rata and pari passu, on such Interest Payment Date, as RC2 Payments to the holders of the RC2 Residual Certificates.		
RC1 Payments	0.00	0.00
RC2 Payments	0.00	0.00
<b>Total paid</b>	<b>0.00</b>	<b>0.00</b>



## Precise Mortgage Funding 2020-1B PLC

### Monthly Investor Report

April 2025

#### Portfolio Analysis

As at: 31/03/2025

Current Balance	Current Balance	Current Balance (%)	Number of Accounts	Number of Accounts (%)
0 <=x< 75,000	6,480,629.63	5.13%	125	20.10%
75,000 <=x< 100,000	6,680,318.66	5.28%	75	12.06%
100,000 <=x< 125,000	6,858,864.14	5.42%	61	9.81%
125,000 <=x< 150,000	5,896,859.89	4.66%	43	6.91%
150,000 <=x< 175,000	6,496,066.47	5.14%	40	6.43%
175,000 <=x< 200,000	4,934,222.59	3.90%	26	4.18%
200,000 <=x< 225,000	5,925,526.46	4.69%	28	4.50%
225,000 <=x< 250,000	8,106,445.83	6.41%	34	5.47%
250,000 <=x< 275,000	4,418,169.03	3.49%	17	2.73%
275,000 <=x< 300,000	6,878,677.94	5.44%	24	3.86%
300,000 <=x< 325,000	9,645,879.51	7.63%	31	4.98%
325,000 <=x< 350,000	6,420,029.06	5.08%	19	3.05%
350,000 <=x< 375,000	4,366,722.46	3.45%	12	1.93%
375,000 <=x	43,325,346.76	34.27%	87	13.99%
<b>Total</b>	<b>126,433,758.43</b>	<b>100.00%</b>	<b>622</b>	<b>100.00%</b>

Original Balance	Current Balance	Current Balance (%)	Number of Accounts	Number of Accounts (%)
0 <=x< 75,000	5,487,572.13	4.34%	105	16.88%
75,000 <=x< 100,000	6,660,180.26	5.27%	81	13.02%
100,000 <=x< 125,000	7,449,649.69	5.89%	68	10.93%
125,000 <=x< 150,000	5,582,420.48	4.42%	43	6.91%
150,000 <=x< 175,000	5,462,916.00	4.32%	34	5.47%
175,000 <=x< 200,000	5,134,852.67	4.06%	28	4.50%
200,000 <=x< 225,000	6,787,397.32	5.37%	33	5.31%
225,000 <=x< 250,000	9,136,402.90	7.23%	39	6.27%
250,000 <=x< 275,000	3,590,625.72	2.84%	15	2.41%
275,000 <=x< 300,000	8,477,942.29	6.71%	30	4.82%
300,000 <=x< 325,000	7,707,485.27	6.10%	25	4.02%
325,000 <=x< 350,000	7,429,385.60	5.88%	22	3.54%
350,000 <=x< 375,000	4,232,634.70	3.35%	12	1.93%
375,000 <=x	43,294,293.40	34.24%	87	13.99%
<b>Total</b>	<b>126,433,758.43</b>	<b>100.00%</b>	<b>622</b>	<b>100.00%</b>



## Precise Mortgage Funding 2020-1B PLC

### Monthly Investor Report

April 2025

#### Portfolio Analysis

Original LTV	Current Balance	Current Balance (%)	Number of Accounts	Number of Accounts (%)
0 <=x< 70%	24,915,983.03	19.71%	117	18.81%
70% <=x< 75%	19,376,616.55	15.33%	76	12.22%
75% <=x< 80%	64,225,877.18	50.80%	321	51.61%
80% <=x< 85%	17,915,281.67	14.17%	108	17.36%
85% <=x< 90%	0.00	0.00%	0	0.00%
90% <=x< 95%	0.00	0.00%	0	0.00%
95% <=x< 105%	0.00	0.00%	0	0.00%
<b>Total</b>	<b>126,433,758.43</b>	<b>100.00%</b>	<b>622</b>	<b>100.00%</b>

Current LTV	Current Balance	Current Balance (%)	Number of Accounts	Number of Accounts (%)
0 <=x< 70%	28,962,806.25	22.91%	179	28.78%
70% <=x< 75%	18,469,846.25	14.61%	69	11.09%
75% <=x< 80%	59,267,210.96	46.88%	271	43.57%
80% <=x< 85%	18,560,110.24	14.68%	98	15.76%
85% <=x< 90%	906,824.72	0.72%	4	0.64%
90% <=x< 95%	0.00	0.00%	0	0.00%
95% <=x< 100%	266,960.01	0.21%	1	0.16%
100% <=x< 105%	0.00	0.00%	0	0.00%
105% <=x	0.00	0.00%	0	0.00%
<b>Total</b>	<b>126,433,758.43</b>	<b>100.00%</b>	<b>622</b>	<b>100.00%</b>

Origination Year	Current Balance	Current Balance (%)	Number of Accounts	Number of Accounts (%)
<=2014	0.00	0.00%	0	0.00%
2015	0.00	0.00%	0	0.00%
2016	0.00	0.00%	0	0.00%
2017	0.00	0.00%	0	0.00%
2018	112,950,794.44	89.34%	526	84.57%
2019	13,482,963.99	10.66%	96	15.43%
<b>Total</b>	<b>126,433,758.43</b>	<b>100.00%</b>	<b>622</b>	<b>100.00%</b>



## Precise Mortgage Funding 2020-1B PLC

### Monthly Investor Report

April 2025

#### Portfolio Analysis

Original Term (years)	Current Balance	Current Balance (%)	Number of Accounts	Number of Accounts (%)
0 <=x< 15	6,594,731.72	5.22%	35	5.63%
15 <=x< 17	8,274,062.19	6.54%	35	5.63%
17 <=x< 19	1,775,488.33	1.40%	13	2.09%
19 <=x< 21	19,461,350.65	15.39%	94	15.11%
21 <=x< 23	346,166.85	0.27%	3	0.48%
23 <=x< 25	2,549,617.67	2.02%	12	1.93%
25 <=x< 27	72,048,908.12	56.99%	341	54.82%
27 <=x< 29	753,220.83	0.60%	6	0.96%
29 <=x	14,630,212.07	11.57%	83	13.34%
<b>Total</b>	<b>126,433,758.43</b>	<b>100.00%</b>	<b>622</b>	<b>100.00%</b>

Remaining Term (years)	Current Balance	Current Balance (%)	Number of Accounts	Number of Accounts (%)
0 <=x< 5	3,870,921.56	3.06%	23	3.70%
5 <=x< 8	2,321,677.40	1.84%	11	1.77%
8 <=x< 11	9,145,887.03	7.23%	39	6.27%
11 <=x< 14	19,623,782.53	15.52%	95	15.27%
14 <=x< 17	3,609,328.86	2.85%	21	3.38%
17 <=x< 20	72,478,728.15	57.33%	344	55.31%
20 <=x< 23	1,492,281.05	1.18%	10	1.61%
23 <=x< 26	5,259,544.81	4.16%	31	4.98%
26 <=x	8,631,607.04	6.83%	48	7.72%
<b>Total</b>	<b>126,433,758.43</b>	<b>100.00%</b>	<b>622</b>	<b>100.00%</b>

Repayment Type	Current Balance	Current Balance (%)	Number of Accounts	Number of Accounts (%)
Repayment	9,604,630.94	7.60%	90	14.47%
Interest Only	116,829,127.49	92.40%	532	85.53%
Part & Part	0.00	0.00%	0	0.00%
<b>Total</b>	<b>126,433,758.43</b>	<b>100.00%</b>	<b>622</b>	<b>100.00%</b>



## Precise Mortgage Funding 2020-1B PLC

### Monthly Investor Report

April 2025

#### Portfolio Analysis

Current Interest	Current Balance	Current Balance (%)	Number of Accounts	Number of Accounts (%)
0.00% <=x< 2.50%	0.00	0.00%	0	0.00%
2.50% <=x< 3.00%	0.00	0.00%	0	0.00%
3.00% <=x< 3.25%	0.00	0.00%	0	0.00%
3.25% <=x< 3.50%	0.00	0.00%	0	0.00%
3.50% <=x< 3.75%	195,383.56	0.15%	2	0.32%
3.75% <=x< 4.00%	0.00	0.00%	0	0.00%
4.00% <=x< 4.25%	0.00	0.00%	0	0.00%
4.25% <=x< 4.50%	2,852,632.23	2.26%	8	1.29%
4.50% <=x< 4.75%	1,728,642.28	1.37%	6	0.96%
4.75% <=x< 5.00%	6,463,052.28	5.11%	20	3.22%
5.00% <=x	115,194,048.08	91.11%	586	94.21%
<b>Total</b>	<b>126,433,758.43</b>	<b>100.00%</b>	<b>622</b>	<b>100.00%</b>

Current Margin Over Releval	Current Balance	Current Balance (%)	Number of Accounts	Number of Accounts (%)
0.00% <=x< 2.50%	0.00	0.00%	0	0.00%
2.50% <=x< 3.00%	272,489.88	0.22%	3	0.48%
3.00% <=x< 3.25%	0.00	0.00%	0	0.00%
3.25% <=x< 3.50%	15,174,579.51	12.00%	65	10.45%
3.50% <=x< 3.75%	195,383.56	0.15%	2	0.32%
3.75% <=x< 4.00%	0.00	0.00%	0	0.00%
4.00% <=x< 4.25%	0.00	0.00%	0	0.00%
4.25% <=x< 4.50%	2,852,632.23	2.26%	8	1.29%
4.50% <=x< 4.75%	2,495,102.61	1.97%	17	2.73%
4.75% <=x< 5.00%	13,848,530.34	10.95%	74	11.90%
5.00% <=x	91,595,040.30	72.45%	453	72.83%
<b>Total</b>	<b>126,433,758.43</b>	<b>100.00%</b>	<b>622</b>	<b>100.00%</b>

Interest Rate Index	Current Balance	Current Balance (%)	Number of Accounts	Number of Accounts (%)
BBR	112,244,781.21	88.78%	505	81.19%
SONIA	14,188,977.22	11.22%	117	18.81%
<b>Total</b>	<b>126,433,758.43</b>	<b>100.00%</b>	<b>622</b>	<b>100.00%</b>





## Precise Mortgage Funding 2020-1B PLC

### Monthly Investor Report

April 2025

#### Portfolio Analysis

Loan Purpose	Current Balance	Current Balance (%)	Number of Accounts	Number of Accounts (%)
Purchase	0.00	0.00%	0	0.00%
Re-Mortgage	72,808,706.22	57.59%	296	47.59%
Equity Release	0.00	0.00%	0	0.00%
Investment Mortgage	53,625,052.21	42.41%	326	52.41%
Right to buy	0.00	0.00%	0	0.00%
<b>Total</b>	<b>126,433,758.43</b>	<b>100.00%</b>	<b>622</b>	<b>100.00%</b>

Buy-To-Let	Current Balance	Current Balance (%)	Number of Accounts	Number of Accounts (%)
Yes	126,433,758.43	100.00%	622	100.00%
No	0.00	0.00%	0	0.00%
<b>Total</b>	<b>126,433,758.43</b>	<b>100.00%</b>	<b>622</b>	<b>100.00%</b>

Arrears Multiple	Current Balance	Current Balance (%)	Number of Accounts	Number of Accounts (%)
x <=0	122,673,781.77	97.03%	610	98.07%
0 <x< 1	1,147,080.62	0.91%	3	0.48%
1 <=x< 2	1,494,626.53	1.18%	6	0.96%
2 <=x<3	494,065.38	0.39%	1	0.16%
3 <=x	624,204.13	0.49%	2	0.32%
<b>Total</b>	<b>126,433,758.43</b>	<b>100.00%</b>	<b>622</b>	<b>100.00%</b>

Self-Certified Product	Current Balance	Current Balance (%)	Number of Accounts	Number of Accounts (%)
Yes	0.00	0.00%	0	0.00%
No	126,433,758.43	100.00%	622	100.00%
No Data	0.00	0.00%	0	0.00%
<b>Total</b>	<b>126,433,758.43</b>	<b>100.00%</b>	<b>622</b>	<b>100.00%</b>

Valuation Type	Current Balance	Current Balance (%)	Number of Accounts	Number of Accounts (%)
Full, Internal and External Insp	126,433,758.43	100.00%	622	100.00%
Other	0.00	0.00%	0	0.00%
<b>Total</b>	<b>126,433,758.43</b>	<b>100.00%</b>	<b>622</b>	<b>100.00%</b>



## Precise Mortgage Funding 2020-1B PLC

### Monthly Investor Report

April 2025

#### Portfolio Analysis

Region	Current Balance	Current Balance (%)	Number of Accounts	Number of Accounts (%)
East	10,213,246.83	8.08%	50	8.04%
East Midlands	5,674,912.14	4.49%	48	7.72%
London	60,215,156.74	47.63%	158	25.40%
North East	2,635,405.12	2.08%	36	5.79%
North West	7,022,981.47	5.55%	72	11.58%
Scotland	0.00	0.00%	0	0.00%
South East	15,205,517.59	12.03%	71	11.41%
South West	8,575,546.22	6.78%	41	6.59%
Wales	2,166,360.05	1.71%	20	3.22%
West Midlands	11,813,354.77	9.34%	91	14.63%
Yorkshire and the Humber	2,911,277.50	2.30%	35	5.63%
<b>Total</b>	<b>126,433,758.43</b>	<b>100.00%</b>	<b>622</b>	<b>100.00%</b>

Year Built	Current Balance	Current Balance (%)	Number of Accounts	Number of Accounts (%)
x< 1900	10,416,922.06	8.24%	49	7.88%
1900 <=x< 1920	41,232,093.62	32.61%	216	34.73%
1920 <=x< 1940	21,390,161.57	16.92%	87	13.99%
1940 <=x< 1960	6,524,289.25	5.16%	37	5.95%
1960 <=x< 1980	14,409,629.69	11.40%	81	13.02%
1980 <=x< 2000	8,574,607.04	6.78%	50	8.04%
2000 <=x< 2002	1,723,079.24	1.36%	7	1.13%
2002 <=x< 2004	2,085,046.99	1.65%	9	1.45%
2004 <=x< 2006	2,367,791.61	1.87%	12	1.93%
2006 <=x<=2013	17,710,137.36	14.01%	74	11.90%
<b>Total</b>	<b>126,433,758.43</b>	<b>100.00%</b>	<b>622</b>	<b>100.00%</b>

Seasoning (years)	Current Balance	Current Balance (%)	Number of Accounts	Number of Accounts (%)
0 <=x< 5	0.00	0.00%	0	0.00%
5 <=x< 6	9,508,809.51	7.52%	65	10.45%
6 <=x< 7	116,871,310.80	92.44%	556	89.39%
7 <=x	53,638.12	0.04%	1	0.16%
<b>Total</b>	<b>126,433,758.43</b>	<b>100.00%</b>	<b>622</b>	<b>100.00%</b>



## Precise Mortgage Funding 2020-1B PLC

### Monthly Investor Report

April 2025

#### Portfolio Analysis

Employment Type	Current Balance	Current Balance (%)	Number of Accounts	Number of Accounts (%)
Self Employed	73,954,036.37	58.49%	335	53.86%
Employed	46,992,896.18	37.17%	262	42.12%
Other	5,486,825.88	4.34%	25	4.02%
<b>Total</b>	<b>126,433,758.43</b>	<b>100.00%</b>	<b>622</b>	<b>100.00%</b>

First-time Buyer	Current Balance	Current Balance (%)	Number of Accounts	Number of Accounts (%)
Yes	2,248,415.66	1.78%	14	2.25%
No	124,185,342.77	98.22%	608	97.75%
<b>Total</b>	<b>126,433,758.43</b>	<b>100.00%</b>	<b>622</b>	<b>100.00%</b>

Date	31/03/2025
Current Balance	126,433,758.43
Number of Accounts	622
Average Loan Balance	203,269.71
Maximum Loan Balance	992,935.02
Weighted Average Interest Rate	6.85%
Weighted Average Mortgage Margin	5.81%
Weighted Average Seasoning (yrs)	6.34
Weighted Average Remaining Maturity (yrs)	17.30
Buy To Let	126,433,758.43
Interest Only	116,829,127.49
Weighted Average Original LTV	72.83%
Weighted Average Current LTV	72.46%



*DISCLAIMER*

*U.S. Bank Global Corporate Trust Limited is a limited company registered in England and Wales having the registration number 05521133 and a registered address of 125 Old Broad Street, Fifth Floor, London, EC2N 1AR. U.S. Bank Global Corporate Trust Limited, Dublin Branch is registered in Ireland with the Companies Registration Office under Reg. No. 909340 with its registered office at Block F1, Cherrywood Business Park, Cherrywood, Dublin 18, Ireland D18 W2X7. U.S. Bank Global Corporate Trust Limited is a Trust Corporation and not a banking institution and is not authorised to carry on banking business in the United Kingdom, Ireland or any other jurisdiction.*